

New

# AutoMini



The right sound from the TV to your hearing instrument

When you watch TV, you want to hear well without increasing the volume more than necessary. The answer is AutoMini, a personal sound enhancer designed for anyone who uses a hearing instrument equipped with a telecoil. AutoMini always gives you the right sound level without disturbing background noise, regardless of the volume your family and friends prefer.

**NEW!** Now with Time Delay - for perfect synchronisation of sound/image for flat screens



ReSound

rediscover hearing

# AutoMini - Instead of high volume

## The right sound with the right picture – also with a digital box

AutoMini gives you the right sound with the right picture. It automatically detects when you switch between sources such as a DVD player and video recorder. The automatic connection even functions smoothly with a digital box. AutoMini recognises which unit you have selected and switches the sound source at the same time as the TV changes the source picture. Your TV watching becomes relaxing and free of disturbance.

## Flexible and functional

All the coupling options available on your TV will work with AutoMini. You get high-quality sound enhancement on any TV you are watching.

## Sound synchronisation for flat screens - "Time Delay"

In certain TV sets with LCD and Plasma screen, there is a slight delay of the image compared to the sound. This can be adjusted with a time delay knob, so that image and sound become perfectly synchronized. For older TV sets, the function can be turned off.

## Individual sound control

Normally, you only need to set your desired volume on your AutoMini once, when you install it. The volume control (AGC) then automatically keeps the sound at a constant level even if the volume is changed on the TV.

## Easy to connect

You connect AutoMini between your TV and the chair loop. The TV sound is then transmitted directly from the chair loop to your hearing instrument via the telecoil. The chair loop and the accessories for the three coupling options are supplied with AutoMini. You can even listen via a neck loop with its own volume control (not supplied). Whichever option you choose, you can be sure to enjoy a pleasant and natural sound experience.

## Handy to bring along

AutoMini is compact and handy for travelling or taking to your weekend cottage. Simply connect it to the TV set you want to watch. You can select your own TV volume anywhere without disturbing anyone else or being disturbed by them.

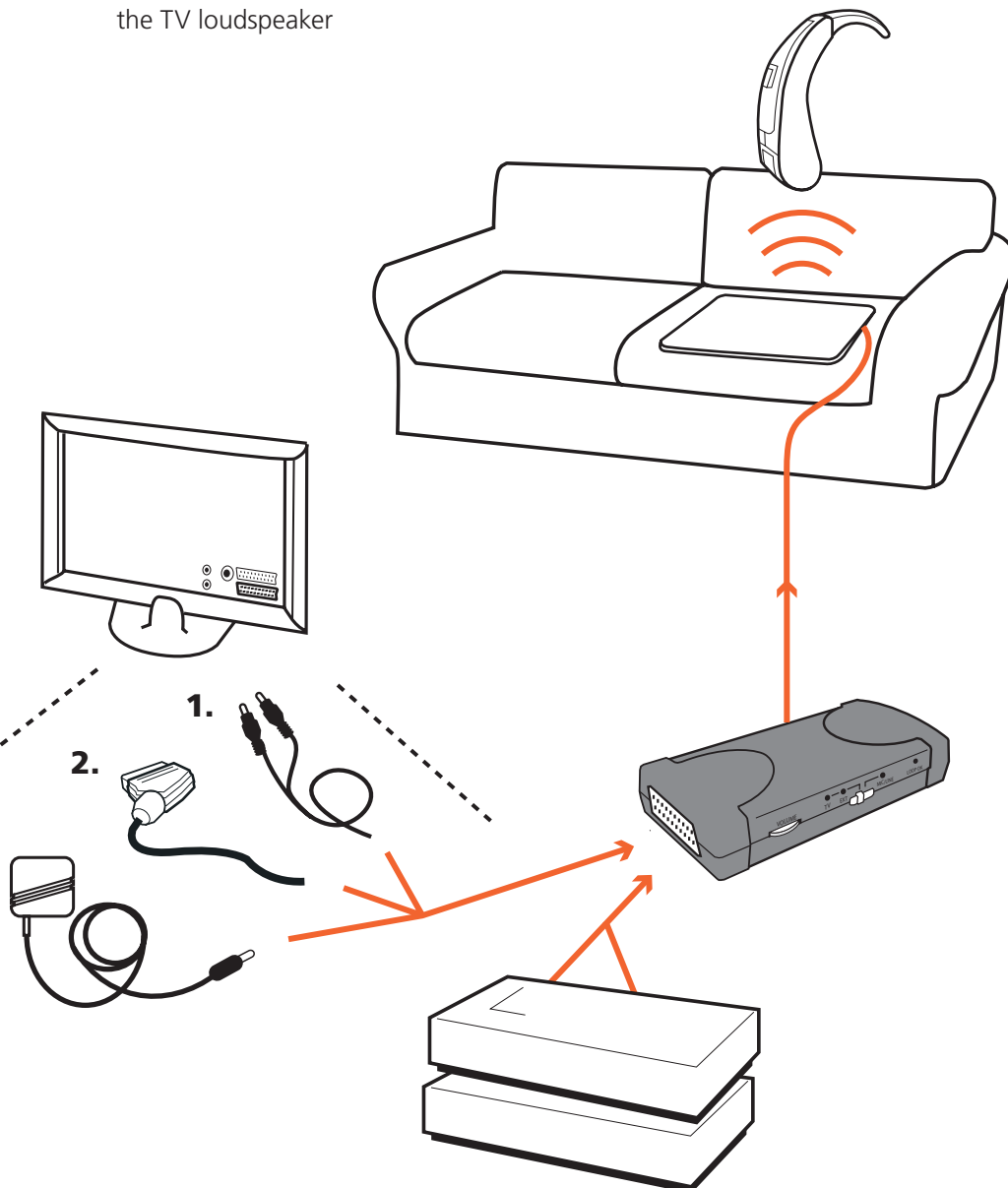


AutoMini is shown in natural size here



AutoMini works with all TV sets. It can pick up the sound from your TV set in three different ways:

1. Via the TV's line-out socket
2. Via the TV's SCART socket
3. Via a microphone (ordered separately) connected to the TV loudspeaker



## Alternative solution for the right TV sound



### TS-150

More powerful loop amplifier than AutoMini with the same automatic sound-switchover function. Excellent for the home or in smaller premises (up to 150 m<sup>2</sup>). Instead of a chair loop, a loop is installed in the room so that the hearing instrument can pick up the sound anywhere.

## Part numbers

**AutoMini Time Delay set, EU** 200 21 82

### **AutoMini Time Delay set, EU includes:**

AutoMini	200 10 32
Mains adapter	200 10 37
Cable RCA 3.5 mm jack, 1.5 m	200 10 33
Scart cable	200 10 39
Chair loop	200 20 45
DIN connector	163 373 00

### **Extra accessories:**

Neck loop with volume control	414 01 60
Connection cable for neck loop	200 20 26
Microphone FXT for 3.5 mm jack, 4 m	200 60 13
Adapter for two microphones	200 90 01
Splitter/adapter chair loop	200 22 21

**TS-150 Time Delay loop amplifier, EU** 200 10 23

## Technical data

### **AutoMini amplifier**

Input signal:	50mV-12V
Recommended output impedance:	4 Ohm
Output power:	6 W at 4 Ohm
AGC attack time:	50 ms
AGC release time:	35 s
Frequency range:	100 Hz-8 kHz, -3 dB rel. 1 kHz
Distortion:	<1%
Signal/noise ratio:	>40 dB (A-weighted)
Delay of sound:	Off and 50-180 ms
Weight:	150 g (excl. mains adapter)
Dimensions:	145 x 70 x 30 mm (with fixing device about 38 mm)

### **External mains adapter**

Plug-in adapter, primary 230 VAC 50 Hz, secondary 12 VAC 15 VA

### **Chair loop**

Resistance:	4 Ohm
Dimensions:	41 x 41 x 0.2 cm

9950080 Issue 2, 2010-03 We reserve the right to make changes in performance and specification without prior notice.

## MANUFACTURER

*in the sense of EU Medical Device Directive 93/42/EEC:*

### **GN ReSound A/S**

Lautrupbjerg 7  
DK-2750 Ballerup  
Denmark



*Any issues relating to the EU Medical Device Directive 93/42/EEC should be directed to GN ReSound A/S.*

*Service and product-related questions: contact GN ReSound AB ALD Division.*

[www.gnresound-ald.com](http://www.gnresound-ald.com)

GN ReSound AB ALD Division  
Box 12874  
SE-112 98 STOCKHOLM  
SWEDEN

Tel. +46 8 441 16 70  
Fax +46 8 441 16 80  
info.ald@gnresound.se

**ReSound**

rediscover hearing